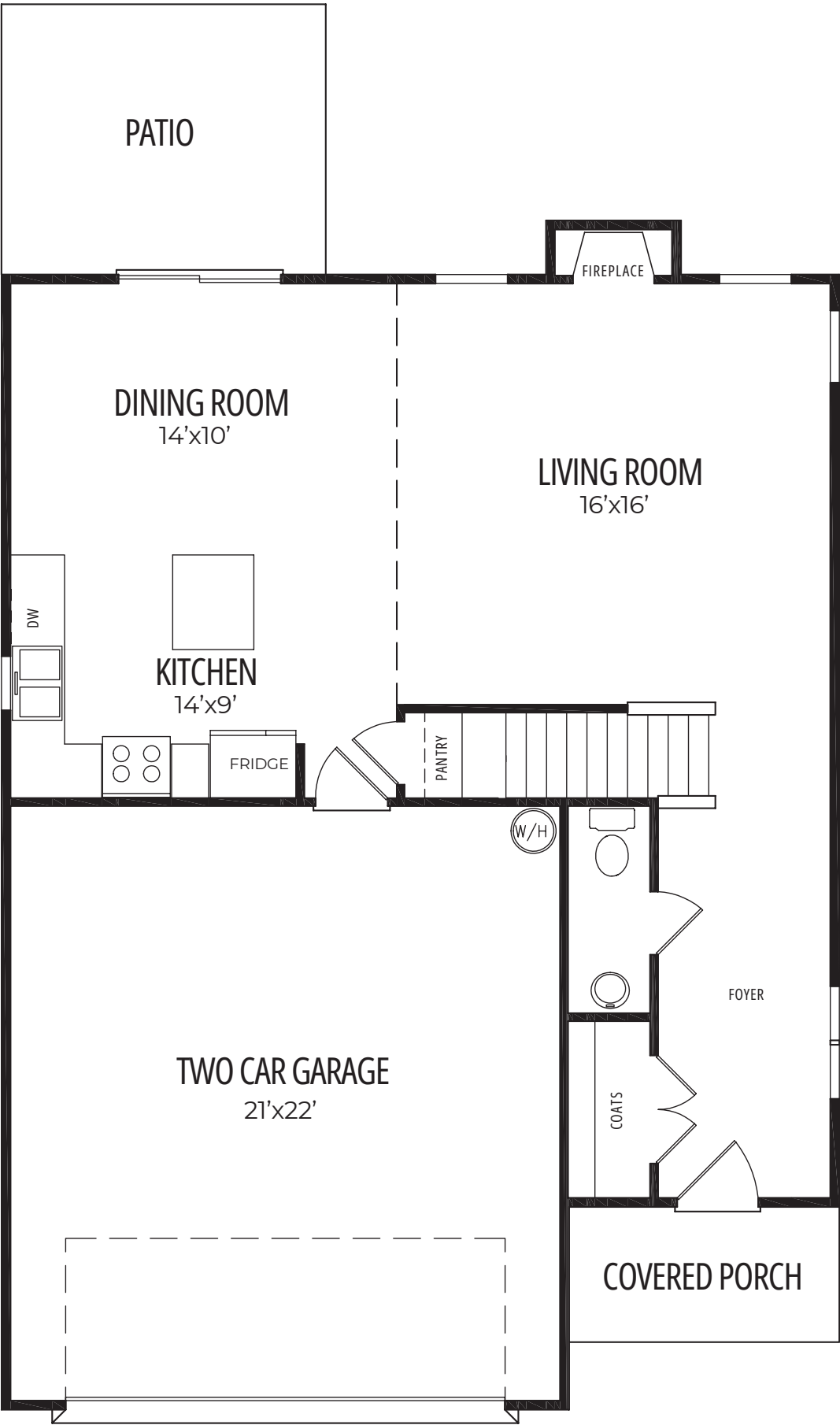


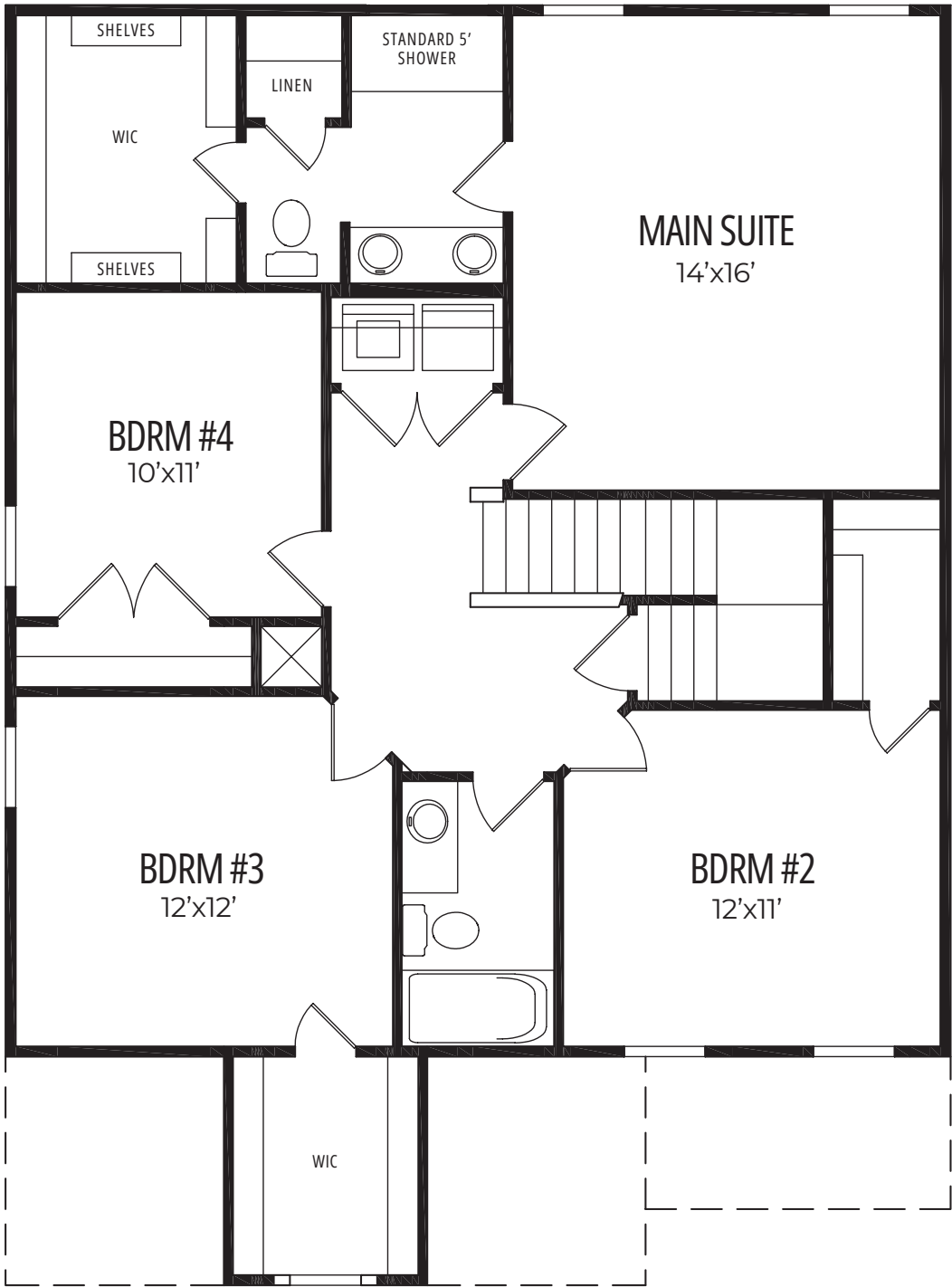


PALMER PLUS

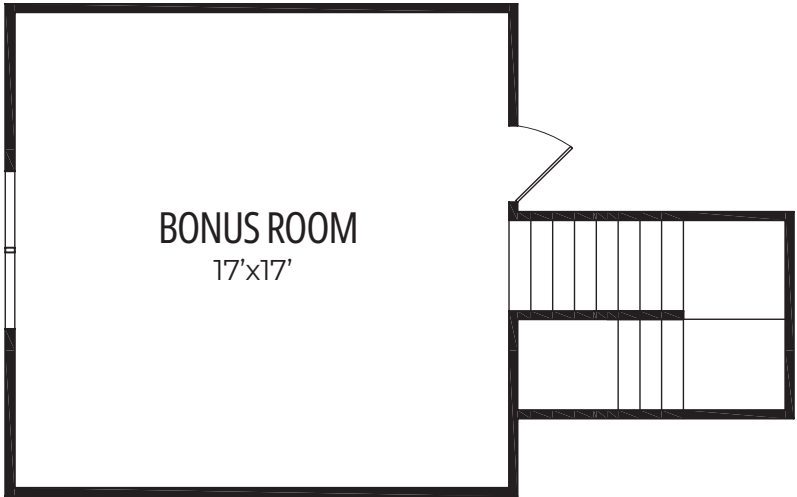
4 Bedroom, 2.5 Bath, 2,223 Sq.Ft.



FIRST FLOOR - 780 SQ. FT

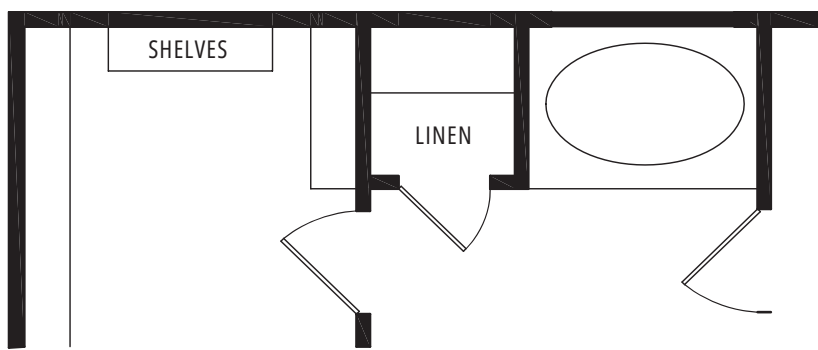


SECOND FLOOR - 1,138 SQ. FT

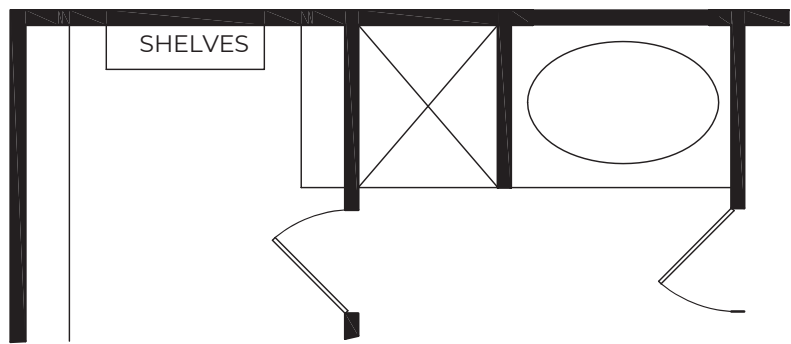


THIRD FLOOR WALKUP - 305 SQ. FT

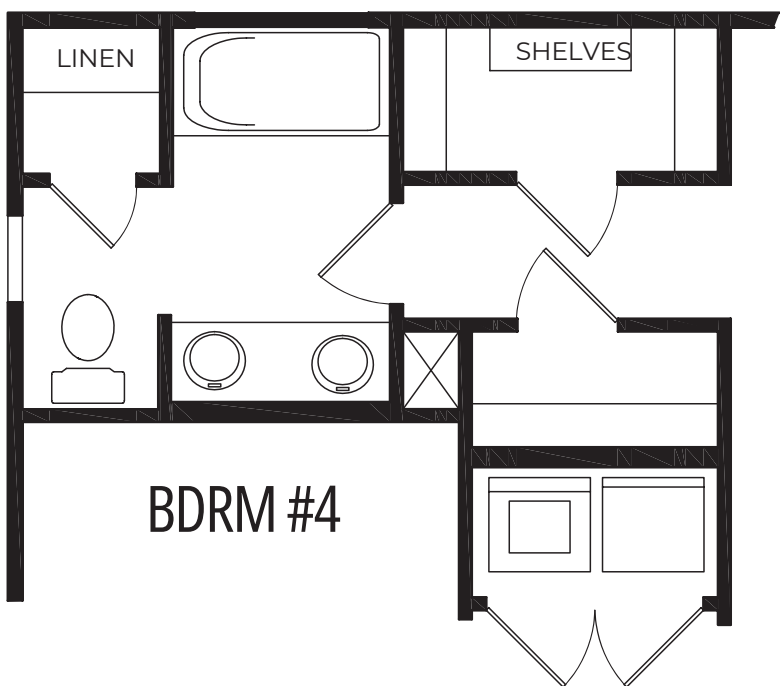
Floorplan Options



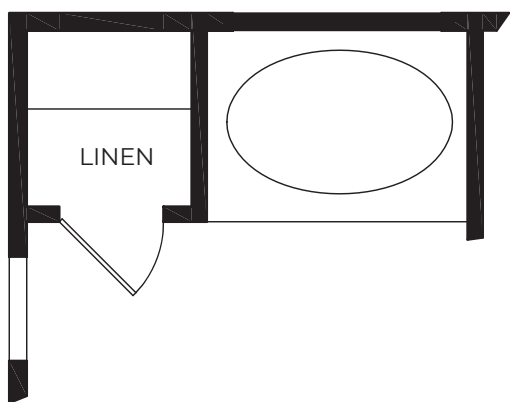
OPTIONAL MAIN SUITE GARDEN TUB



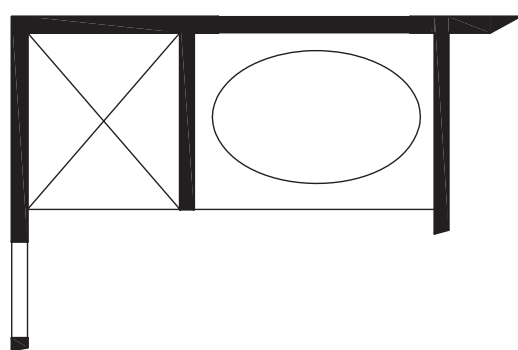
OPTIONAL MAIN SUITE SUNLITE GARDEN TUB



OPTIONAL MAIN SUITE BATHROOM LAYOUT



OPTIONAL MAIN SUITE GARDEN TUB
IN OPTIONAL BATHROOM LAYOUT



OPTIONAL MAIN SUITE SUNLITE GARDEN TUB
IN OPTIONAL BATHROOM LAYOUT



Elevation A



Elevation B



Elevation C

*Prices, plans, dimensions, features, specifications, materials, and availability of homes or communities are subject to change without notice or obligation. Illustrations are artist’s depictions only and may differ from completed improvements. Photos, videos and virtual tours may not accurately represent specifications, selections or floorplan options available in every community.